

2018 LOOKBOOK



WWW.LILYANNE.CA

PROVIDING QUALITY, INNOVATION
& THE LATEST TRENDS IN THE
LASH INDUSTRY



WHO WE ARE...

After more than 20 years in the beauty and aesthetics industry, many of those facilitating education for top brands, Wendy Lieshout was still seeking a range of superior quality product in the lash industry that was difficult to find. So, she decided to brand her own line.

Sourcing and working with some of the best manufacturers the world has to offer, she has brought together a superb selection of the highest quality items for both professional use and retail clients.

Wendy's inspiration, fueling her dedicated pursuit of only the best, every day, is her only granddaughter, for whom the line is named.

We are proud to present to you: Lily Anne and Girlfriends by Lily Anne.



ADHESIVES & PROCEDURE



LILY ANNE DIAMOND LASH ADHESIVE 5 ML / 10 ML

This NEW GENERATION ADHESIVE works in a different way than traditional adhesives. It attaches lashes instantly, with a 0 to 1 second contact, resulting in extremely fine and soft lash extensions. This adhesive is recommended for advanced lash technicians due to its rapid bonding time.

6 month open shelf life / 9 month unopened

**Adhesive Tray - Recommended to use with the Diamond adhesive.*

Comes free with each adhesive.

LILY ANNE SAPPHIRE LASH ADHESIVE 5 ML / 10 ML

This adhesive has a thinner viscosity and is used by coating the natural lash first. With a 2-3 second bonding time, it is recommended for beginners or lash technicians that require a little more time.

2 ½ month open shelf life / 4 month unopened

PINK GEL REMOVER 10 ML

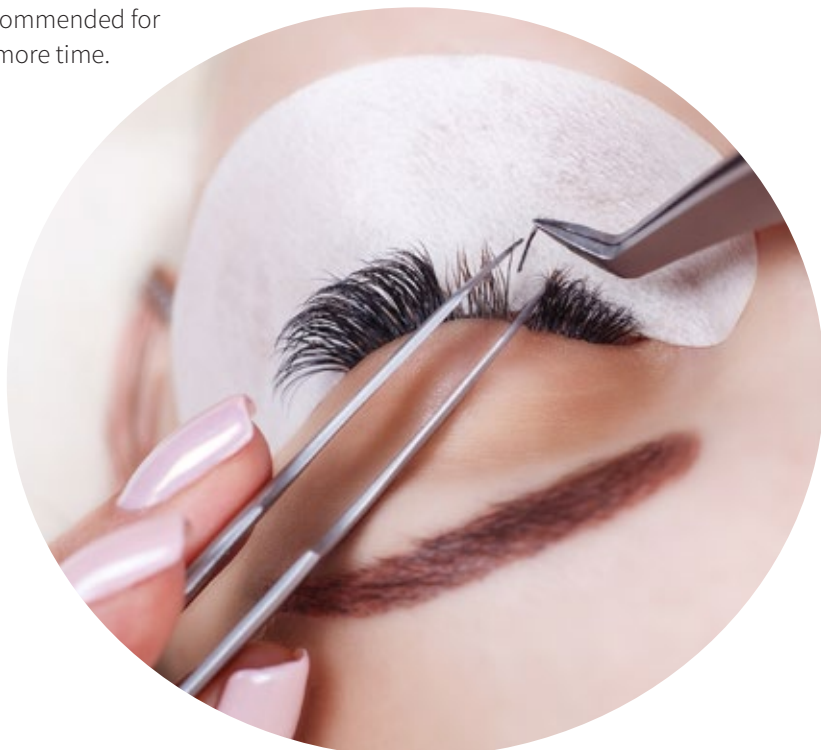
Remover dissolves eyelash adhesive, for fast and effective removal. The gel format ensures it will not run into the eyes.

PRE-TREATMENT 10 ML

This protein remover is used to clean and disinfect the natural lashes. It will remove any dirt, oil, make-up that can prevent lash extensions from properly adhering.

PRIMER 10 ML

Primer enhances lashes with conditioners that strengthen adhesive for longer bonding life.



LASH EXTENSIONS

FAUX MINK

Our individual “Mink” lashes are made from the finest quality Polybutylene Terephthalate (PBT) materials, which are light and flexible. Finish is semi-matte, with $\frac{2}{3}$ of the lash tapered. Lash is beautifully soft, flexible, and very lightweight, with a finished result that looks as natural as real hair. ***Our Most Popular Lash!***

GLOSSY FAUX MINK

Just a bit more gloss finish on these.

FAUX SILK

The Silk lash has a semi-gloss finish, with $\frac{1}{3}$ of the lash tapered. It is heavier than the faux mink, which provides a darker, full finish.

TRI-TONE OMBRE

Tri-Tone is a Mixed Tray, featuring **3 Colors in ONE Lash**: Black at the base, Purple mid lash, and Blue at the tip. Ultra-Soft and Lightweight.

CAMELLIA

Camellia Lashes are gorgeous and light mink lash extensions for volume (3D), also known as ‘*Russian Volume*’ extensions. There are 3 mixed lengths on each strip, which allows you to achieve a natural appearance.

MATTE CASHMERE ELLIPSE FLAT LASH

Cashmere Ellipse lashes are made of high quality materials, with a RICH, NATURAL BLACK color, for a soft and natural look. They are concave on the base, which wraps around the natural lash, preventing the extension from turning or twisting away, and creating more surface for a better bond between the natural lash and extensions. Finished results with these lightweight, luxurious extensions last much longer than average.

SHINY ELLIPSE FLAT LASH

Ellipse Lashes are our most dramatic lash extensions, made of high quality materials, with a RICH JET BLACK (no blue hue) color, for a soft and natural look. They are concave on the base, flattened for a wider look, creating that increased surface for a better bond between natural lash and extensions, with finished results that last much longer than average.

BLACK & RAINBOW SPARKLES

Who doesn’t like a bit of sparkle?! Add some to the outer corners for a fun look. Great to add on to Strip lashes as well.



LASH EXTENSIONS

RUSSIAN VOLUME FANS 2D & 5D

The Russian Volume style is accomplished when multiple lash extensions (2 or 5 hairs) are *pre-handmade* into a fan then adhered to ONE natural lash. For that quick & easy volume set.

DOUBLE LAYER VOLUME FANS

The Double Layer Volume Lashes, with C and D Curls mixed on one row (placed on top of each other) are perfect for creating dramatic looking fans. Combination of different curls give lashes a fluffy, dramatic look. *These are not pre-made fans!* This product is for advanced lash technicians who have mastered the volume by hand technique.

TWO-TONE

Add a little ombre and subtle color to the tips of the lash extensions while keeping the base black.



TOOLS, SUPPLIES & KITS

WE HAVE A LARGE VARIETY OF TOOLS THAT WILL MAKE YOUR JOB EASIER.



Please see attached price list for all of your lash extension supplies!!

RETAIL

Not everybody wants lash extensions, so this is a perfect line to retail to all your clients!

girlfriends
OF *lily*
ANNE

3D MINK LASHES

Perfect for adding a little bit of drama to your every day look.

3D SILK LASHES

A softer, more natural look for every day.

HUMAN HAIR LASHES

MAGNETIC LASHES

A range of half lash and full strip styles available. Adhesive and fuss-free lashes!

METAL LASH APPLICATOR

Makes applying the strip lashes easier.

PLASTIC TWEEZERS

Suggested for the magnetic lashes.





2018 LOOKBOOK



WWW.LILYANNE.CA

PROVIDING QUALITY, INNOVATION & THE
LATEST TRENDS IN THE LASH INDUSTRY

girlfriends
OF *lily*
ANNE

RETAIL

Not everybody wants lash extensions, so this is a perfect line to retail to all your clients!



3D MINK LASHES

Perfect for adding a little bit of drama to your every day look.



3D SILK LASHES

A softer, more natural look for every day.



RETAIL

Not everybody wants lash extensions, so this is a perfect line to retail to all your clients!

HUMAN HAIR LASHES



MAGNETIC LASHES

A range of half lash and full strip styles available.
Adhesive and fuss-free lashes!



METAL LASH APPLICATOR

Makes applying the strip lashes easier.

PLASTIC TWEEZERS

Suggested for the magnetic lashes.

